

Document: Patio Base Assembly

Department: Engineering

Prepared By: C. L'Esperance

901-4010 Patio Base Contents

Description	Quantity	P/N
5/16-18 Stainless Steel Hex Nut	16	4200-0701
¼-20 x 3/4 Allen Head Screw	18	4500-1578
¼-20 Reversible Lock Nut	8	4200-0300
4x Caster Kit	1	4700-1035
Sheet Metal Body	1	5140-1250
Side Skin, Stainless	2	5140-1255

1. Ensure a sizable work area has been cleared for the assembly of the patio base. Use a soft assembly surface, like a blanket, so that it does not scratch the finish during assembly.
2. Place the front and back panels on their sides, parallel to one another. Ensure the top and bottom are in matching orientation, as seen in the figures 2&3. Use the hole patterns to determine the Top and Bottom faces. The front and back panels should be spaced approximately two feet apart from one another (Figure 4).

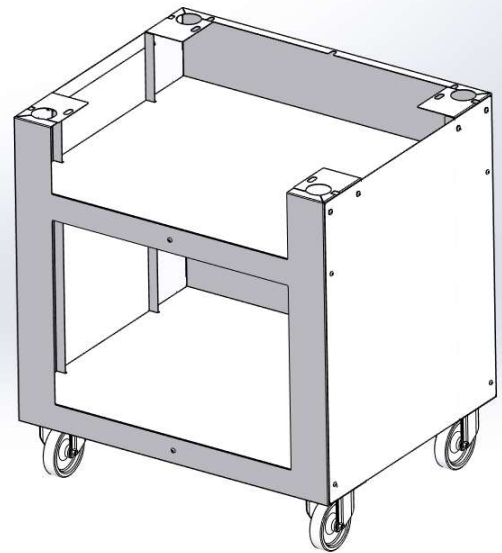
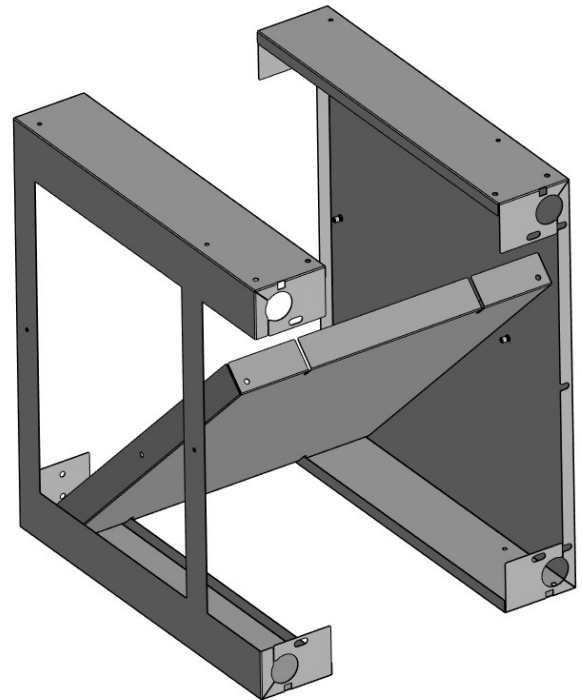

Figure 1: Assembled Base

Figure 2: Bottom face

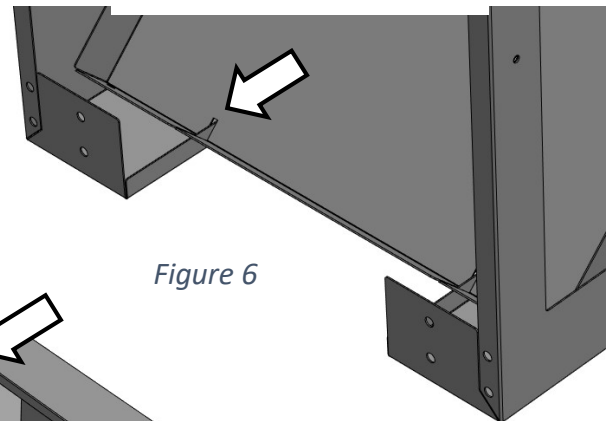
Figure 3: Top face

Figure 4: 24" spacing between sides

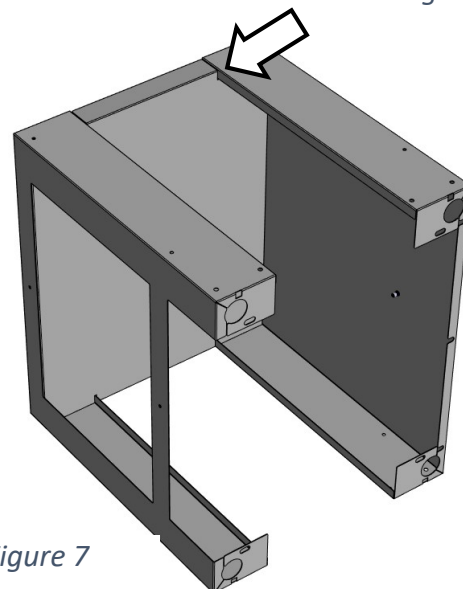
- From the top side of the stand (indicated by the large hole pattern) slide one of the shelves between the front and back panels horizontally, with the flat face of the shelf facing the top face of the base. Tilt the shelf as you progress toward the bottom of the stand (Figure 5).

*Figure 5: Shelf insert and tilt*

- Align the cutouts in the shelf with the flanges of the Back/Front panels as seen in Figure 6.
- As you tilt and stand the shelf panel vertical, align the same shelf cutouts with the other side of the base (Figure 7).

*Figure 6*

- Once all openings have been aligned, justify the lower shelf toward the base of the unit, you'll note the holes in the shelf align with pieces

*Figure 7*

those in the front and back

Document: Patio Base Assembly

Department: Engineering

Prepared By: C. L'Esperance

- Repeat the shelf insertion process from steps 3-5 with the second shelf. Align this shelf such that its holes match the mounting holes towards the top of the stand.

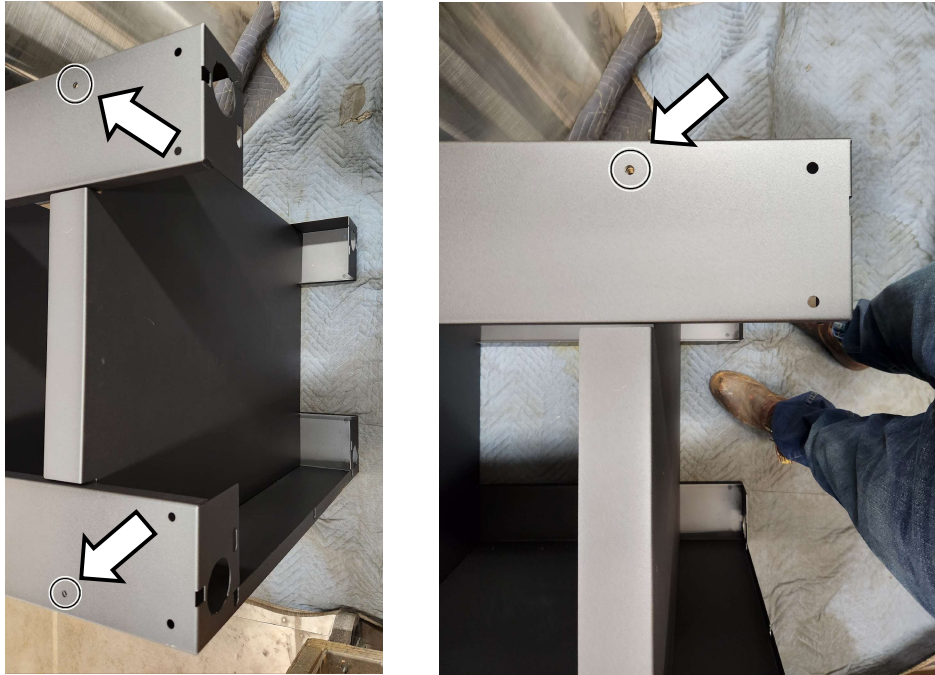


Figure 8: Justification and Alignment (upper shelf)

- With the 2 shelves in position, prep the 2 sheet metal side panels. Peel the vinyl from the edges of the part, as well as from around any holes. Leave the vinyl on the center of the sheet metal to protect from scratches during assembly.



Figure 9: Vinyl Removal

Document: Patio Base Assembly

Department: Engineering

Prepared By: C. L'Esperance

9. Place the sheet metal side on the partially assembled frame. Ensure the orientation of the panel is such that the holes in the frame and panel match.



Figure 10: Side Hole Pattern Alignment

10. Use the provided screws to secure the 4 alignment points that join the front & back panels to the shelf and side.



Figure 10: Side Screw Locations

11. Flip the stand over so that the affixed body side is facing the ground, align and affix the other body side in the same manner.

Mounting the Casters

The caster kit contains 2 swiveling/locking casters, as well as 2 fixed casters. The customer may choose to have the casters configured differently depending on their desired manner of handling and transport of the base. The two main options are depicted below, the arrows illustrate how the base will move/steer in each configuration.

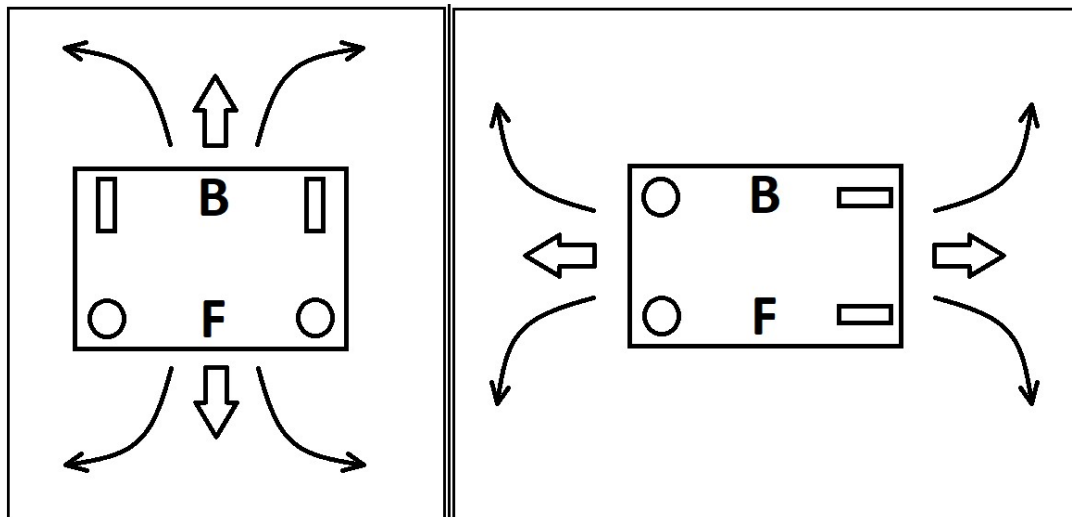


Figure 11: Caster Configurations

Where;

- Circles indicate swivel caster
- Smaller rectangle indicates fixed castor and orientation
- F and B denote Front and Back of the stand/oven respectively.

12. When a configuration has been chosen, use the supplied $\frac{1}{2}$ " hex bolts, flat washer, lock washer and $\frac{1}{2}$ " nut to secure each caster at each of its 4 mounting positions.

- A Bolt and flat washer should be inserted from the castor side and be retained by the flat washer, lock washer and nut from the opposing side

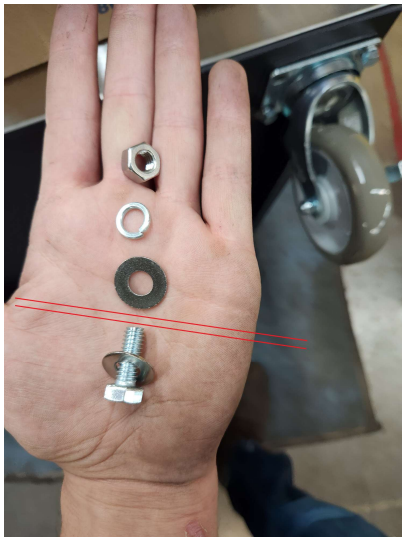


Figure 12: Caster Mounting



13. Once each of the casters has been secured to the base, the unit may be flipped onto its wheels.

14A. If no accessories, such as the utensil retainer or side shelf, have been purchased, use the remaining hex key screws to fill the remaining holes toward the top of the base on each corner. This adds rigidity and retains hardware for future application of accessories.



Figure 13: Top Hole Positions

14B. if the 902-0023 tool rack has been purchased, use the 2 innermost holes on desired side to secure with the provided hex key screws and nuts.

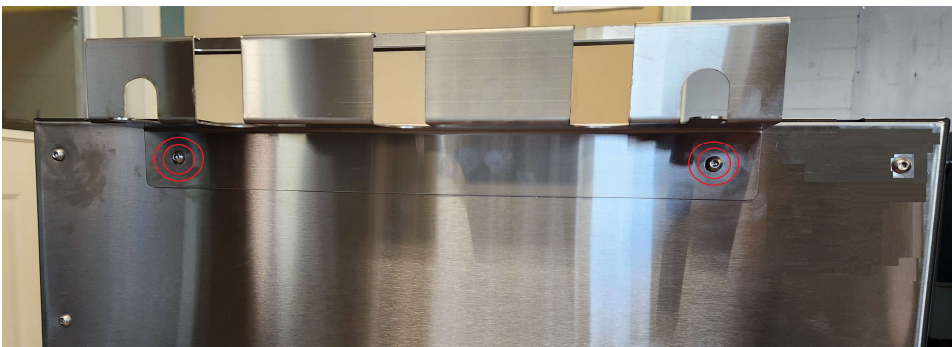
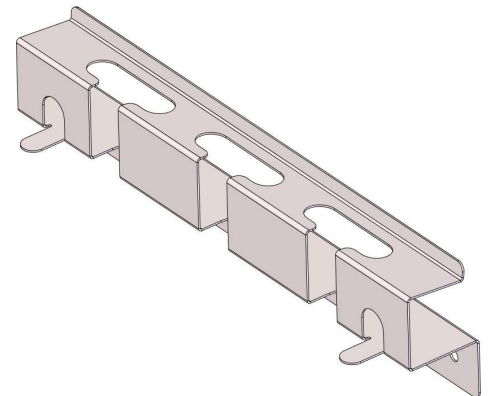


Figure 14: Tool Rack Mounting

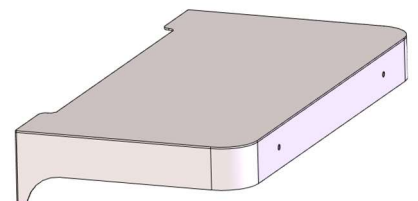


14C. if the 902-0034 wing side shelf has been purchased, use the 2 outermost most holes on desired side to secure with the provided hex key screws and nuts.

- a. To place the shelf post initial assembly, loosen the 2 mounting screws, sliding the shelf mounting hole over screw head and down, then resecure the hardware.

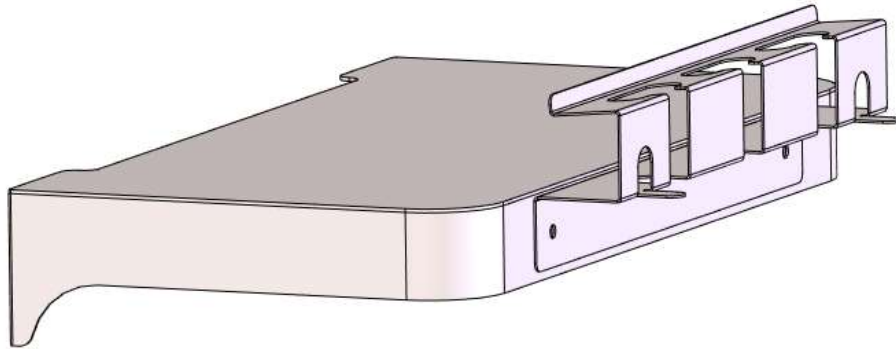


Figure 15: Wing Shelf Mounting



14D. If both 902-0034 shelf & 902-0023 tool rack have been purchased, the tool rack may be mounted to the shelf using the hex key screws and nuts supplied with the 902-0034 shelf.

Figure 16: Tool Rack On Wing Shelf Mounting



Securing Oven to Base

To aid in mounting, it is suggested that any stone or wood racking be removed from the oven cavity if already inserted. This will reduce weight while lifting oven.

1. To secure the patio oven to the base, ensure **the feet are removed from the patio oven**. These will be reattached once the unit is mounted, but will not fit through the holes in the base while mounting.
2. Position the base and lock the casters to ensure stability.
3. Lift and place the patio oven on the base. The edges of the patio oven should be flush with the sides of the base, this will align the leg mounting holes with the openings in base.

Note: lifting of oven should only be done with assisting personnel and/or equipment.

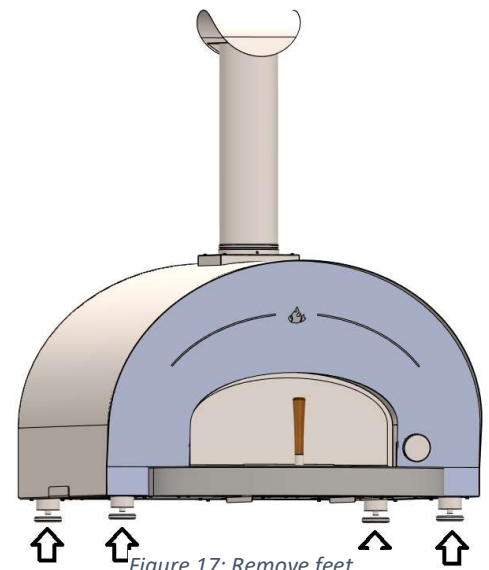


Figure 17: Remove feet

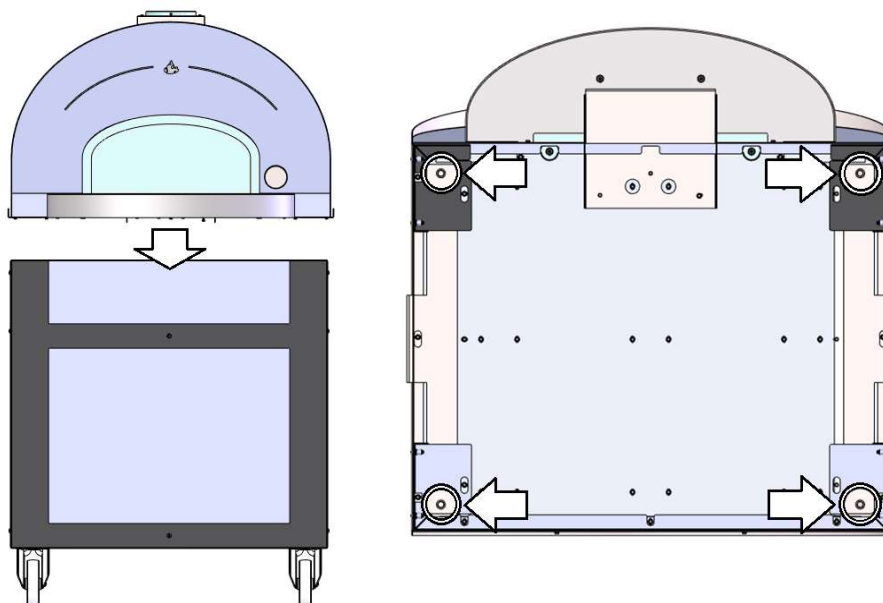


Figure 18: Oven To Base Alignment

Document: Patio Base Assembly

Department: Engineering

Prepared By: C. L'Esperance

4. Attach the legs through the holes in the base to the bottom of the oven. When tightening, ensure the sleeve of each leg rests with each respective hole in the base. Some minor adjustments to oven position may be necessary to properly align.

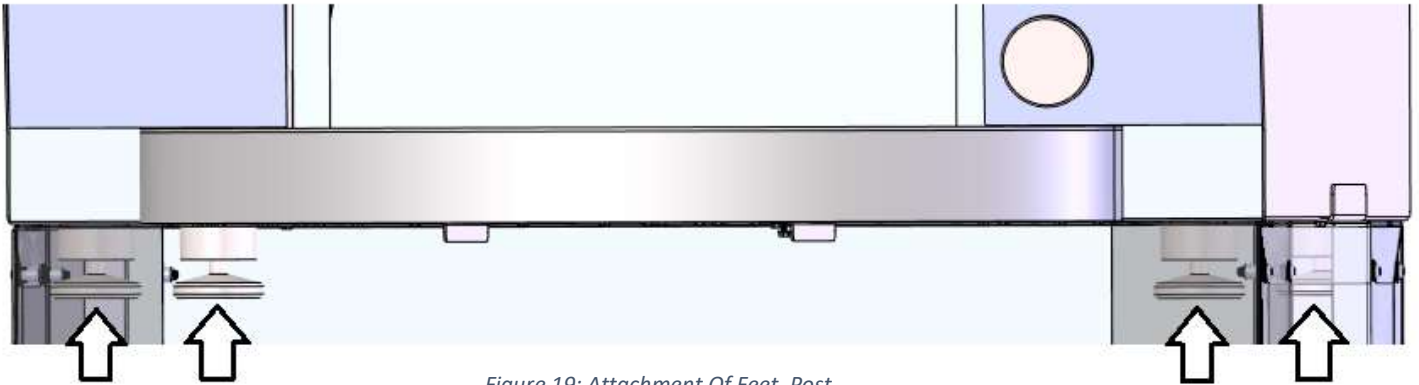


Figure 19: Attachment Of Feet, Post Mount

5. Once the feet have been secured base assembly and mounting are complete. Any stone or wood racks removed from cavity can be replaced.