



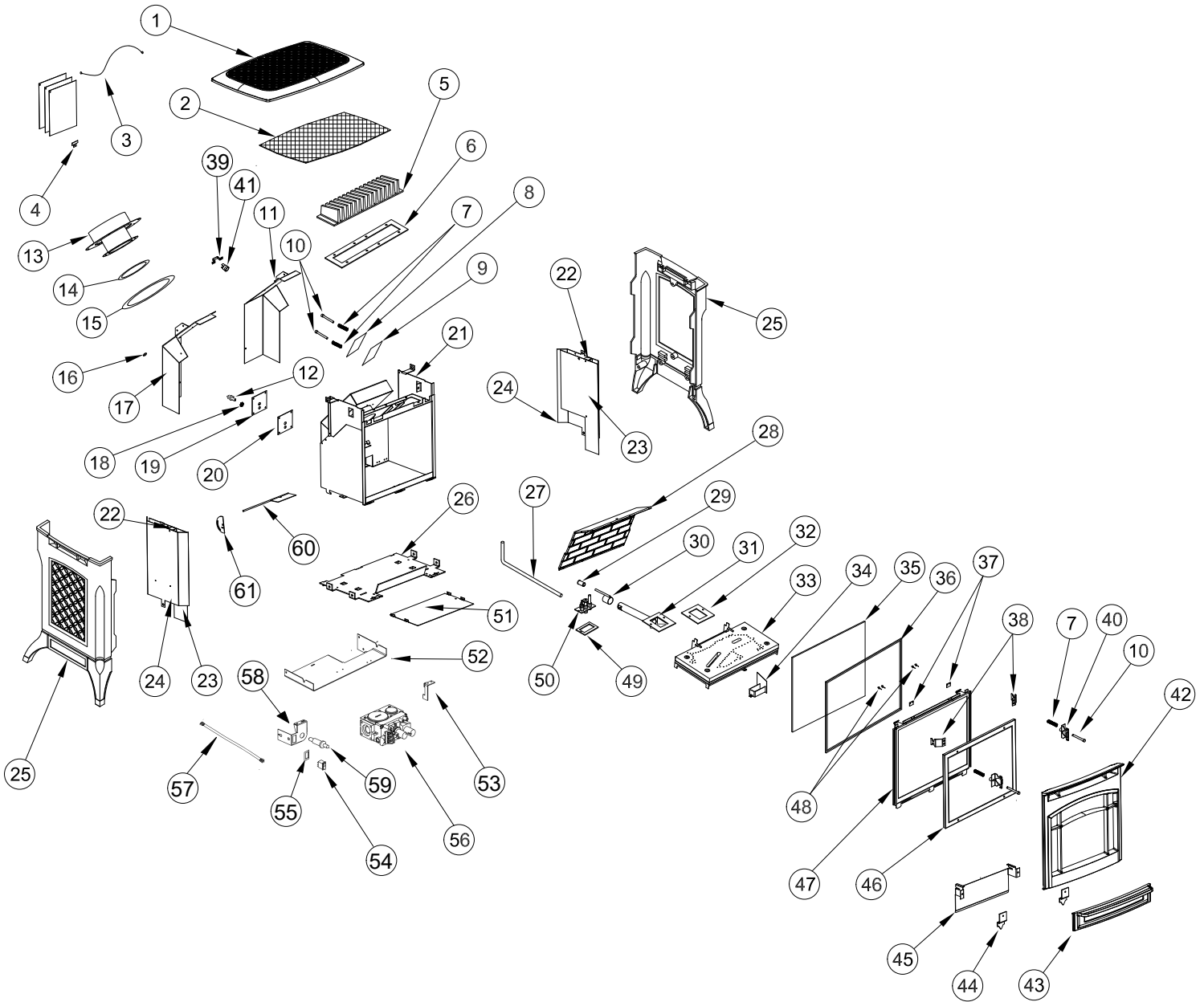
STOWE



Model 8325 Illustrated Parts List



FULL ASSEMBLY





BILL OF MATERIALS

Key	Part #	Description	QTY.
1	2310-232	TOP: MATTE, STO 3	1
2	5323-235	SCREEN: TOP, STO 3, STO 4	1
3	5570-030	CABLE: LABEL,1/16"Dx12",2 EYES,HOM/DV	1
4	5021-060	CLIP: GLASS,HER 1/TRI	1
5	2710-487	HEAT EXCHANGER: TUC2/STO2/STO3/BRI/WAI	1
6	3160-150	GASKET:HEAT EX,4"x14.5	1
7	5240-150	SPRING: COMPRESSION,17-7 PH SS SPC-56234	4
8	5710-100	PLATE:DELAYED IGNITION, TUC 2/BRI/STO 2	1
9	3160-105	GASKET:DELAY IGNIT,TUC/BRI/STO/STO3/WAI	1
10	4500-1400	SCREW: CAP,1/4-20x2-1/4",HEX,ZN,GR5	4
11	5323-274	DEFLECTOR: FAN, REAR RIGHT, STO 3	1
12	7210-020	FITTING:90DEG, 3/8"NPT X 3/8"CMP	1
13	5701-924HB	COLLAR: INLET/EXIT,4"x6-5/8", STOWE/TUC	1
14	3160-155	GASKET: EXIT,4"x6",STO/TUC DV/TRI DV/	1
15	3160-157	GASKET: INLET,6-1/2"x9-5/16",CHA/STO/	1
16	7000-130	GROMMET:SIL.45"PANELX.25"ID,M-633,EQU	1
17	5323-275	DEFLECTOR: FAN, REAR LEFT, STO 3	1
18	4200-0090	NUT: JAM,1/8" NPT,BRASS (15-005)	1
19	5710-210	PLATE: REAR ORIFICE,TUC 2	1
20	3160-107	GASKET: REAR ORIFICE PLATE, TUC 2	1
21	5323-200	FIREBOX: STO 3	1
22	5323-032	SPACER: HEATSHIELD, SIDE, STO 3	4
23	5323-031	HEATSHIELD: SIDE, INNER, STO 3	2
24	5323-033	HEATSHIELD: SIDE,OUTER,STO	2
25	2310-331	SIDE: MATTE, STO 2	2
26	5323-025	BASE: PLATE, STO 3	1
27	7211-018	TUBE:GAS,FLEX,3/8"x12",321/78/05(T6-1	1
28	2310-250	BAFFLE: STO 3	1
29	7200-243	ORIFICE: BURNER HOOD #43	1
30	7211-220	SHUTTER: AIR CONTROL,PRIMARY,STG	1
31	5710-015	VENTURI: BURNER TUBE TUC 2, STOWE 3	1
32	3160-106	GASKET: VENTURI /BURNER, TUC 2	1
33	7211-588	BURNER: EMBER,TUC 2, STO 3	1
34	5710-277	PILOT SHIELD: TUC 2	1
35	3030-060	GLASS:12.75"x15.23"x5mm,TUC 2	1
36	3160-081	GASKET: TAPE,3/4"x1/8",AD (1250'/SPOO	5.66ft
37	5870-095	CLIP: GLASS, BLACK OXIDE,CHA/STO/DVI 32,	2
38	5323-240	BRACKET: FRONT, CORNER, TOP, STO 3	2
39	5870-022	STRAP: T'STAT SWITCH	1
40	5710-279	HANDLE: SPRING HOOK, TUC 2/BRI/WAI	2
41	7000-301	SWITCH: T'STAT, BLOWER	1
42	2310-231	FRONT: MATTE, STO 3	1
43	2310-230	DOOR: ASH LIP, MATTE, STO 3	1
44	5323-040	BRACKET: FRONT, SUPPORT, STO 3	2
45	5323-060	PANEL: MOD, ASHLIP SUPPORT, STO 3	1
46	5323-277	SCREEN: SAFETY, FRONT GLASS, STO 3	1
47	5323-230	FRAME: GLASS, STO 3	1
48	4400-0100	RIVET: BLIND,1/8x1/4" GRIP,SS SEALED	18
49	3160-152	GASKET: PILOT,1.75"x3"	1
50	7211-370	PILOT: PILOT, CON TOP, 3-WAY, NG #199.724	1
51	5323-020	HEATSHIELD: BOTTOM, STO, CHA, BRI, WAI	1



BILL OF MATERIALS

Key	Part #	Description	QTY.
52	5324-010	BRACKET: SIT VALVE MOUNT, STO, CHA	1
53	5324-015	BRACKET: SIT VALVE STOP, STO	1
54	7000-200	SWITCH: 3-WAY, ON/OFF/T'STAT, GOLD CONTACT	1
55	3300-334	LABEL: ON/OFF/T'STAT	1
56	7211-325	VALVE: GAS, UNIVERSAL, 50% TD, SIT(0821.644)	1
57	7000-031	HARNESS: WIRE, ON/OFF, CHA/SAN	1
58	5300-066	BRACKET: PIEZO & SWITCH, ON/OFF	1
59	7210-103	IGNITER: MILLIVOLT(#21000-002)	1
60	5323-270	PLATE: RESTRICTOR, STO 3	1
61	5301-070	INDICATOR: RESTRICT PLATE,CHA 1/SAN 1 DV	1

Cast parts in Enamel Option:

2320-230: BROWN ENAMEL ASH LIP
2320-231: BROWN ENAMEL FRONT
2320-232: BROWN ENAMEL TOP
2320-331: BROWN ENAMEL SIDE
2331-230: OYSTER ENAMEL ASH LIP
2331-231: OYSTER ENAMEL FRONT
2331-232: OYSTER ENAMEL TOP
2331-331: OYSTER ENAMEL SIDE

Accessories:

93-56250 NG FUEL CONVERSION KIT
93-56251 LP FUEL CONVERSION KIT
93-56252 HIGH ALTITUDE NG CONVERSION KIT
93-57230 BLOWER ASSEMBLY KIT
93-58230 GLASS KIT
97-67000 LOG SET KIT
90-56914 REMOTE CONTROL KIT

NOTE: SEE MANUAL FOR ACCESSORY KITS