

Technical Data Sheet

RELIEF SPRING REPLACEMENT

KIT 97-68610

Model Application: WAITSFIELD 8770

INCLUDED IN KIT:

- (4) 4200-0310 Lock Nut
- (8) 4600-0800 Flat Washer
- (4) 5240-150 Compression Spring

TOOLS REQUIRED:

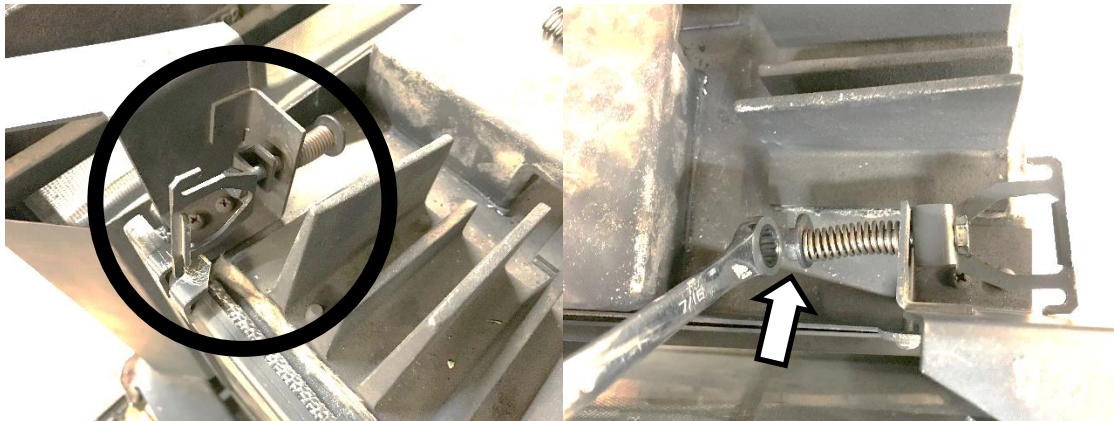
- Phillips Screwdriver
- (2) 7/16" Wrenches

Before You Begin: Work on a cool stove. Turn the gas supply to the stove off.

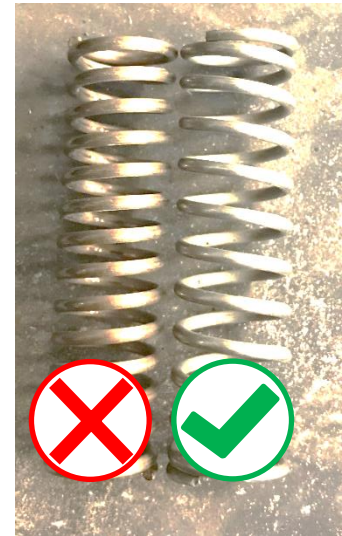
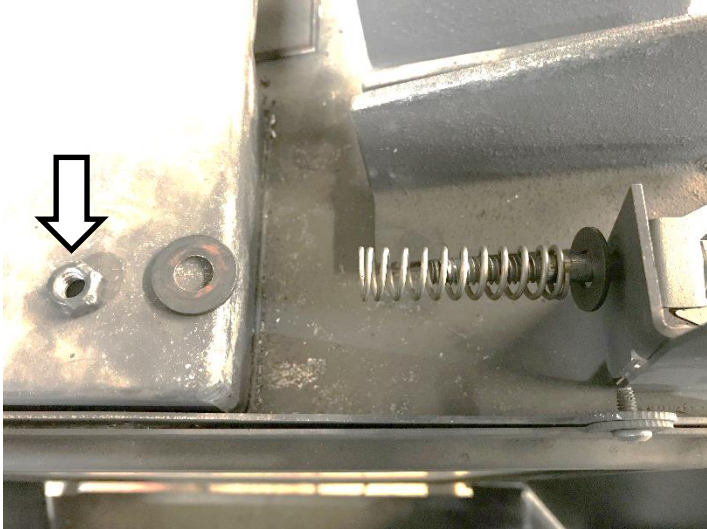
- 1) Remove the top and front cast iron from the stove. Place on a soft surface, be extra careful if working on an enamel stove as the coating can chip if struck.



- 2) Locate the front glass retention clips along the top edge of the front glass. Using two 7/16" wrenches, remove the nut from the spring retention bolt. Be careful when removing the nut, the spring is under tension! Lock nuts are a onetime use. Discard the nuts removed from the relief assembly.



- 3) Remove the incorrect spring, install the correct spring provided in this kit. New hardware is also supplied as the lock nuts are one time use. Do not reuse the nuts removed from the relief assembly.



Spring identification:
Incorrect spring – too many wraps
Correct spring – more open area

- 4) Tighten the nut until the bolt is **just flush** with the back of the nut. Since they are lock nuts, they will begin to become harder to turn as the bolt reaches the back of the nut. **DO NOT OVER TIGHTEN THE NUT! NO THREADS SHOULD BE SHOWING!**



- 5) Replace the springs on both front glass retention clips using the above procedure.

- 6) Move to the rear of the stove. Locate the four screws that hold the back cover on the stove, (two screws on each side). Remove the top two screws, loosen the bottom two screws. Remove the back cover of the stove. The blower is hard wired into the control; rest the back cover to the side, but do not put strain on the wiring.



- 7) Move to the front of the stove. **TAKE NOTE OF THE PLACEMENT OF LOGS. IT IS IMPORTANT THEY GO BACK IN THE SAME PLACE!**

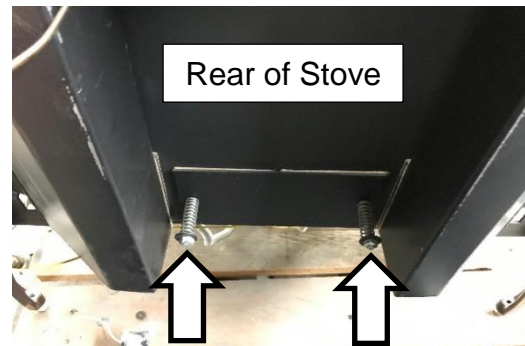
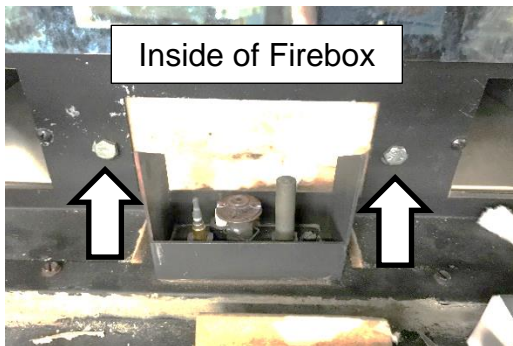
We recommend taking pictures of the logs before removal so they can be returned to the correct location.

Remove the logs from the firebox.

Place them aside on a soft surface. Take care with these logs as they are fragile ceramic.



- 8) Locate the two bolts in the rear of the firebox which retain the rear relief door springs, they are to either side of the pilot assembly. Using two 7/16" wrenches, remove the lock nut from one spring. Only replace one spring at a time.



- 9) Replace the spring from the bolt assembly from the rear of the stove one at a time. Install a new spring and nut over the bolt. Do not reuse lock nuts, they are a one-time use. Tighten the nut until the bolt is **just flush** with the back of the nut. Since they are lock nuts, they will begin to become harder to turn as the bolt reaches the back of the nut.
- 10) Once both springs are replaced, reinstall the rear stove cover removed in step 6.
- 11) Reinstall the log set into the firebox. Be sure to put the logs back in their proper orientation. Use the picture from step 7 as reference.
- 12) Turn the gas to the stove on, test the burner for proper function and light off.
- 13) Reinstall the front glass on the burner box. Cycle the spring relief clips to ensure proper function.
- 14) Replace the front and top cast iron. Return the stove to service.

Hearthstone requests that you report the serial number of the stove back to Hearthstone Tech once the job is complete so we can keep accurate records.