

# Technical Data Sheet

## Grill/Griddle Top Kit Assembly Instructions

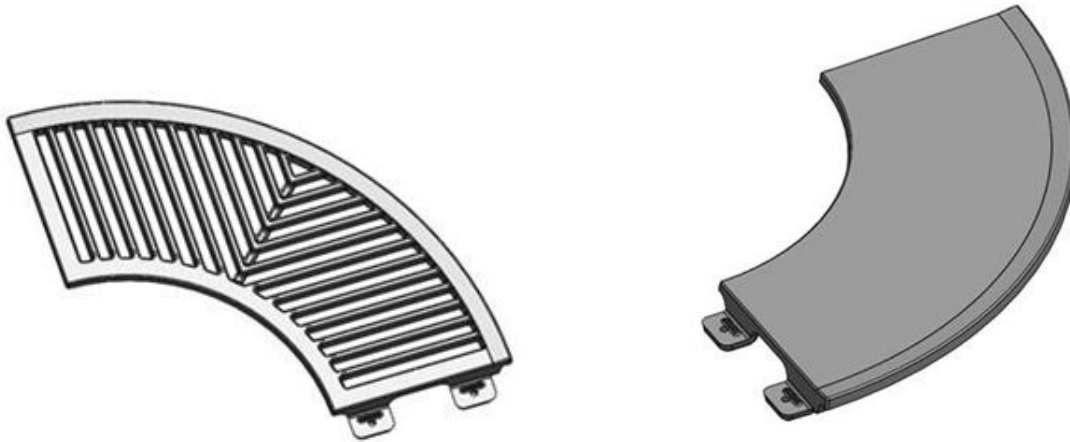
*Kit Number 912-3840 / 912-3841*

### INCLUDED IN KIT:

- (2) 2151-040 Grill Quarter OR (2) 2151-030 Griddle Quarter
- (4) 4500-3125 5/16-18 x 7/8" SS Screws
- (4) 4600-0805 5/16 Lock Washer SS

### TOOLS REQUIRED:

- Work Gloves
- 1/2" Wrench/Socket



**Before You Begin:** Work on a cool fire pit. The grill/griddle quarters must be assembled on a flat surface. This kit must be paired with a second grill kit (kit number 912-3840), or a griddle kit (kit number 912-3841). Due to the weight, we recommend two people to place the assembly on the fire pit. The grills/griddles are coated with food grade enamel, and do not require seasoning prior to use.

### Procedure:

- 1) Lay each grill/griddle quarter face down, on a flat surface. Overlap the mounting tabs onto the adjoining grill/griddle quarter.
- 2) Place a washer on each screw, and thread them into the holes. **Do Not Tighten.** Repeat for each hole.
- 3) With all the screws in place, align\* the grill/griddle quarters. Using the 1/2" wrench, tighten all screws. You can now place the assembly onto the fire pit.

\* When mounting a griddle kit to a grill kit edges will not be flush, due to the built-in drip edge on the griddle.