

Technical Data Sheet

Tudor Model 8120 Heirloom Installation Kit

Kit #91-8220641-Soapstone

Kit #91-8220653-Autumn Brown

Kit #91-8220657-Kashmir Gold

Publish Date: 04/14/2005

Kit Components:

QTY	Description	HS Part #
4	Panel, front and side	1141-232
1-	Panel, front lower	1141-231
2-	Panel, side lower	1141-230
2-	Front panel heat shield	3160-120
2-	Panel retention frames	5120-051
8-	10-24 x 3/8 Type "F" screws	4500-3436

Tools Required:

-Phillips screwdriver
-Cardboard or a piece of heavy paper



Figure 1 - Tudor with Heirloom Panel Set

Ensure the Tudor is cold before attempting to install the Heirloom panel set.

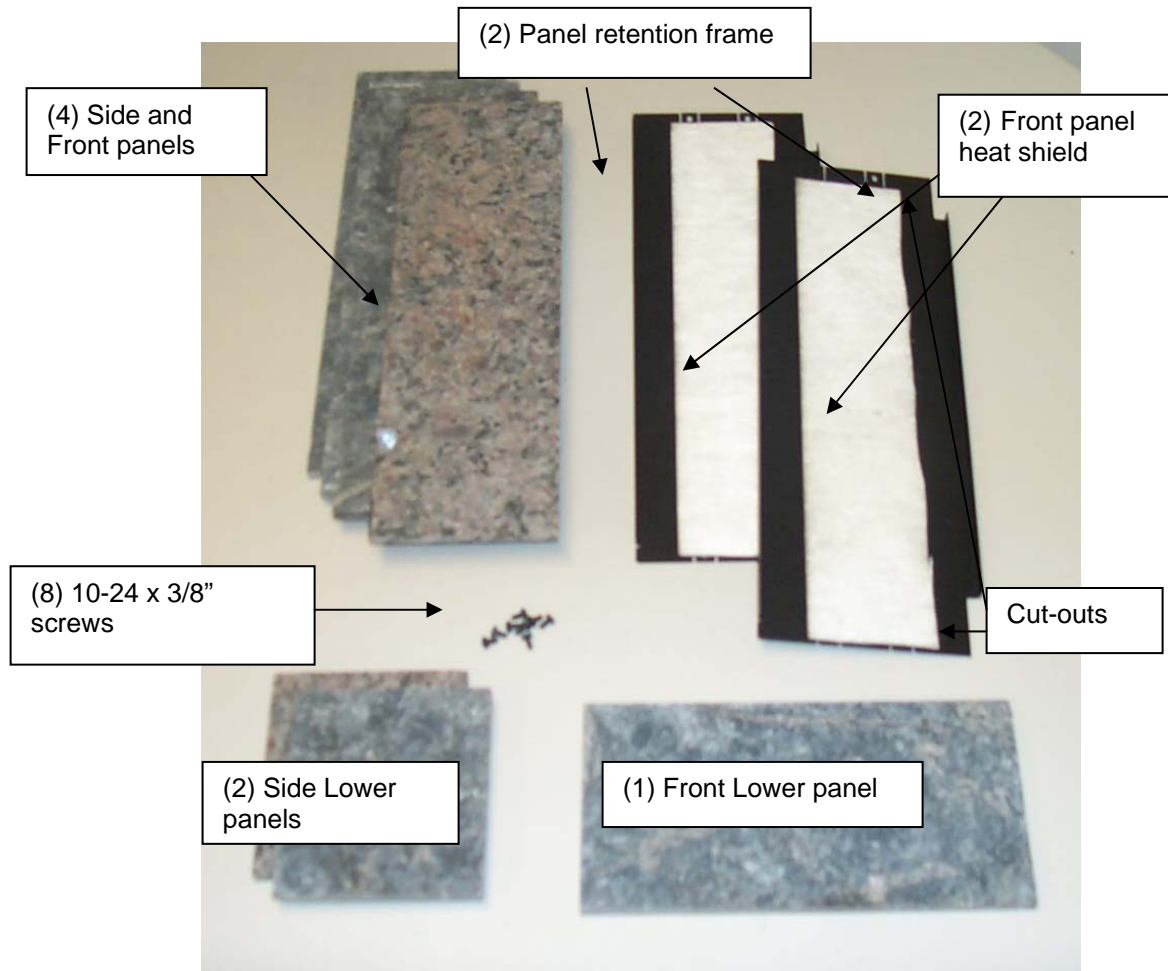


Figure 2 - Heirloom Components

PROCEDURE:

1. Open the front cast doors. (In order to safely install the Heirloom Panel set, you must remove the front doors) To do this, simply pull up on the doors and they will slide up, off their hinges posts.
2. Lay the doors down on a soft scratch resistant surface, such as carpet. (Finish side down)
3. Locate and place one of the **Front/Side Panels** in the left door recess with the finish surface down. Lay one of the **Front Panel Heat Shields** down over the Panel (This is a gasket material that helps to reduce the surface temperature of the stone panel when the doors are closed).
4. Next, place one of the **Panel Retainers** over the left door capturing the **Side/Front Panel** and **Front Panel Heat Shields**. (The side of the retainer with the cutouts goes on the side of the door with the hinges. See Figure 2 for help).
5. Using four of the **10-24 x3/8\"** screws, mount the retainer to the door.
6. Repeat this process for the right side.

7. Once the doors are completed, place them both back on their hinges and close them.
8. Locate the 2 **Lower Side panels**. From the rear of the unit they slide into the channel at the bottom of the frame. Slight tension is all that is needed to keep these in place (See figure 3). Use cardboard or a heavy paper between the panel and the stove to help to keep the panel surface from scratching during installation.
9. Locate and remove the four screws holding the rear heat shield on. Set the heat shield aside for reattachment later.

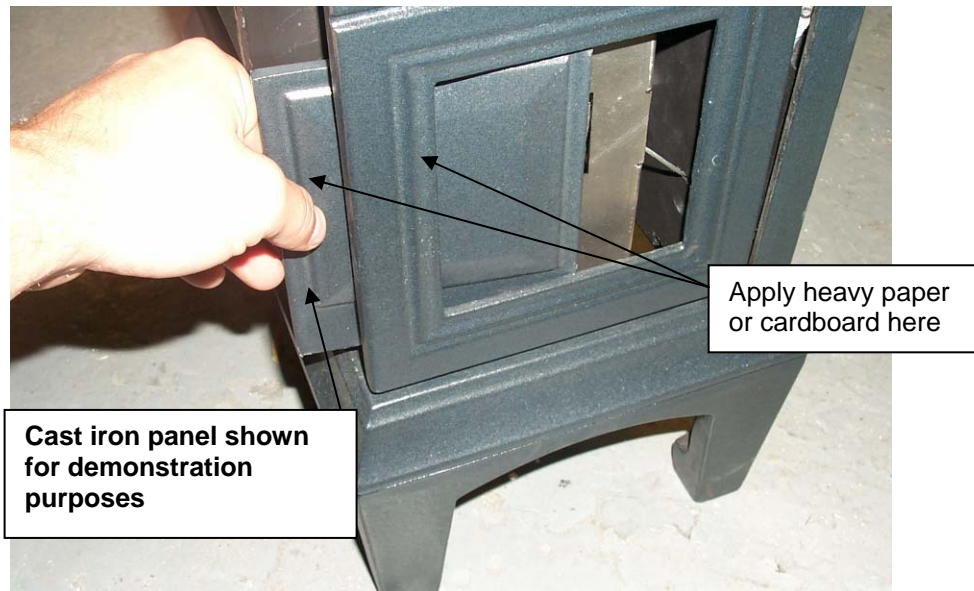


Figure 3 - Small Side Panel Installation

10. Also from the rear of the unit, slide in two of the longer **Side/Front Panels**. These too, only use tension to remain in place (See figure 4).



Figure 4 - Large Side Panel Installation

11. Open the lower control door. Remove the four screws holding the lower front retainer in place. Pull the retainer away from the door. (Take note of the placement of the cable clips. These are installed to keep the cable in place when opening and closing the door)

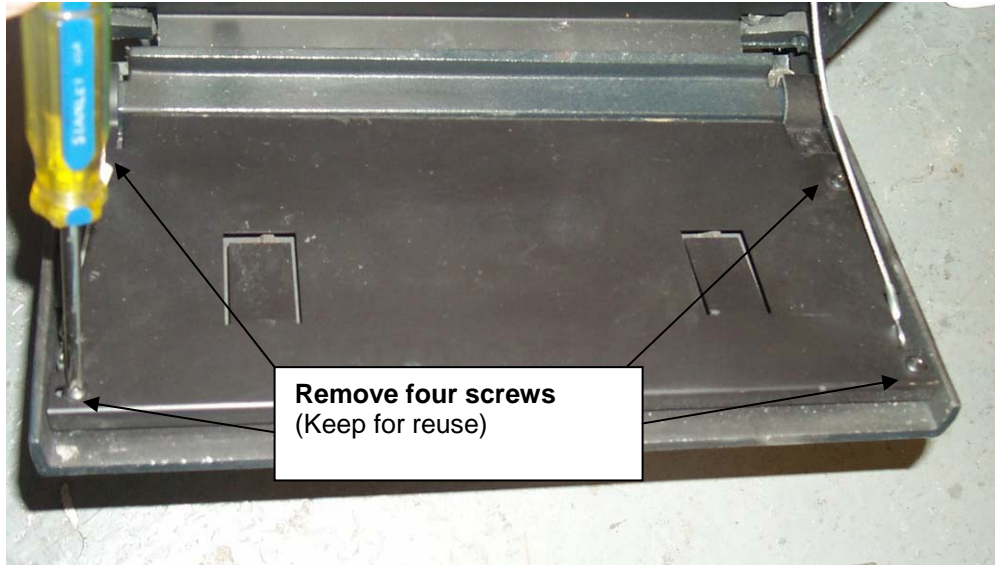


Figure 5 - Front Lower Panel Installation

12. Locate and center the **Front Lower Panel** in the lower control door.
13. Replace the retainer, cable clips, and the four screws. Close the lower control door.
14. Enjoy your stove!