

## Technical Data Sheet

### Heritage Model 8021 Baffle Replacement Kit

#90-76210

*This kit replaces the original baffle, and secures the new one in place on top of the secondary air manifold.*

**Publish Date: 04/19/2006**

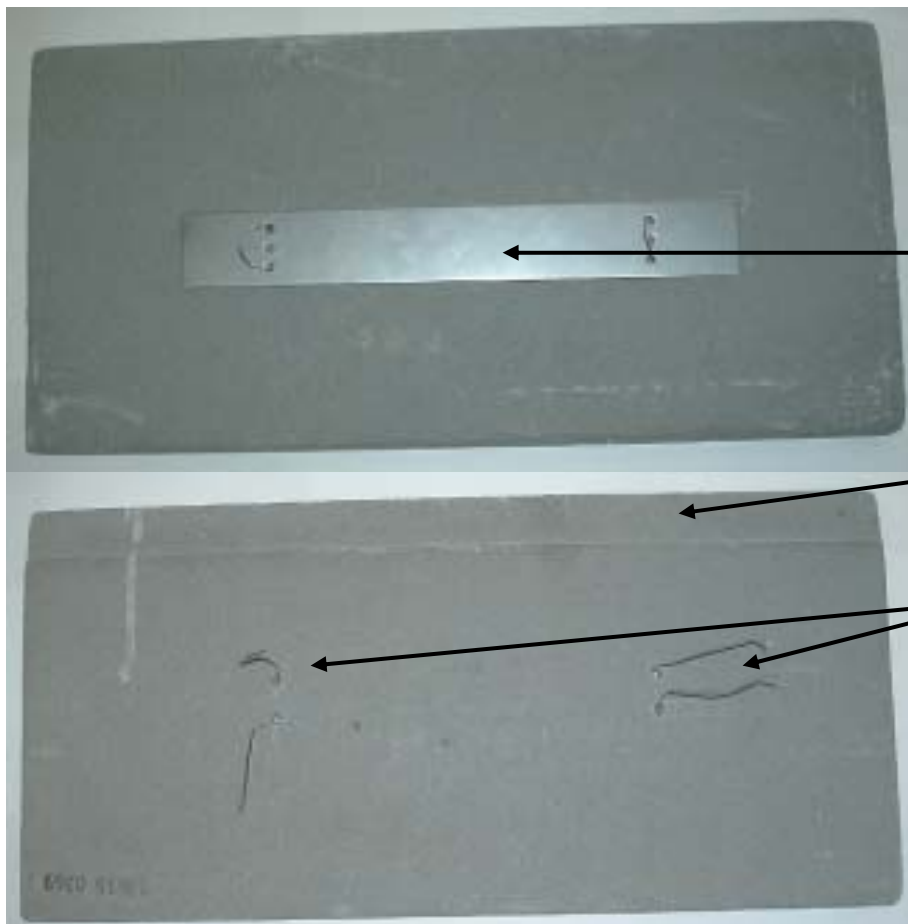
**MATERIALS REQUIRED:**

3120-020: Baffle Board  
5021-066: Baffle Bracket  
7000-092: Specialty Wire (cut into two 12" sections)

**TOOLS REQUIRED:**

Pliers

**BEFORE YOU BEGIN:** Ensure the fire is out and the stove cool to the touch. The baffle is shipped as shown below with the bracket and wires installed on the baffle board.



**Top View of Baffle:**

Bracket installed with wires extending down through bracket and baffle board.

**Bottom View of Baffle:**

Indented lip on front edge of baffle.

The ends of the wires as seen below the baffle board.

## PROCEDURE:

- 1) Remove the damaged baffle from the firebox. *Note: there may be fine ash deposits on top of the baffle.* If it is still in place above the secondary air pipes, lift the back end up so that the front edge of the baffle comes down through between the first and second air pipes. Discard the original baffle.
- 2) Place the new baffle assembly in the firebox with the stainless steel bracket on the top. Position the indented edge of the baffle down and toward the front of the firebox.
- 3) Work the back end of the baffle up between the front and middle secondary air pipes, and then allow it to drop down onto the pipes. The indented lip will rest on the front baffle support when the baffle is properly placed. Ensure the baffle support is seated on the front secondary air tube.
- 4) Place each of the wires so that one end is in front and one end is in back of the middle secondary air pipe. Wrap the loose ends of the wires around the center tube, twist the ends together and bend up and out of the way, as shown in the photo below.



The new baffle is installed in the stove. The wires are tied around the middle pipe and the front indented edge is sitting on the baffle support that is resting on the front air pipe.