

Technical Data Sheet

Installation of the Primary Air Lever: Mansfield 8011 or Phoenix 8612

Part Number: 5012-057

Date: 11/9/2012

Page: 1 of 1

INCLUDED IN KIT:

Air Control Lever

TOOLS REQUIRED:

5/16 Socket, Wrench, or Nut
Driver

PROCEDURE:

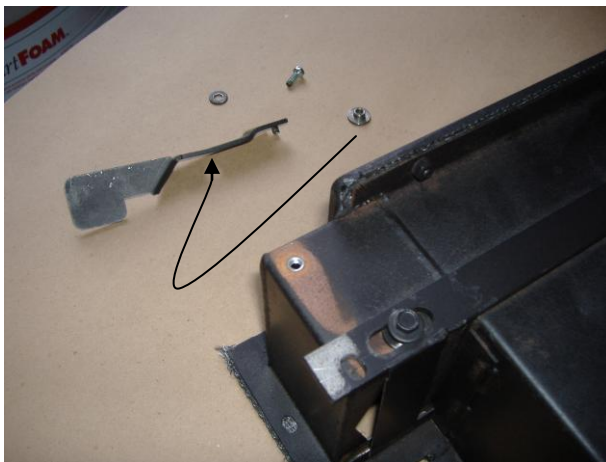


Photo #1
Primary Air Lever with
bolt, washer, and
bushing.

1. Place the small end of the bushing into the hole in the primary air lever. (see photo 1)
2. Hook the tab of the air lever into the slot on the primary air control slide. (see Photo 2)



Photo #2
Place the tab of the
lever into the slot on
the air control slide.

3. With the handle hooked into the air control slide, secure the handle by turning in the bolt and washer. (see photo 3)

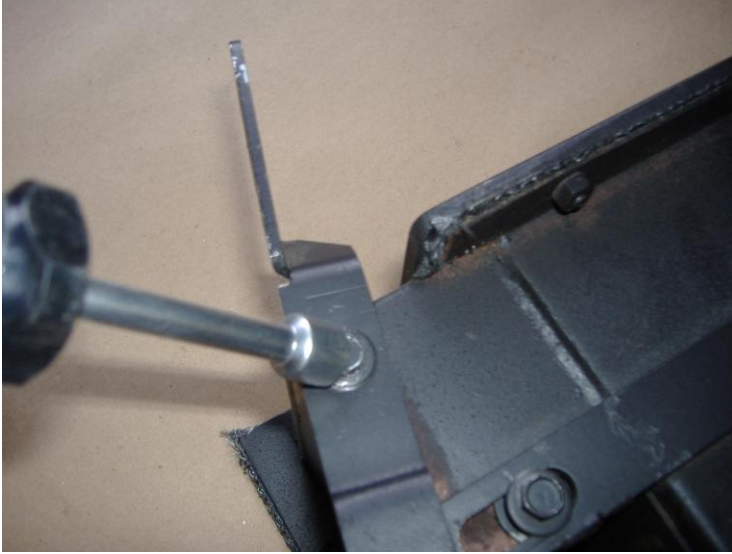


Photo #3
Secure the handle to
the stove.



Photo #4
The air control lever
installed