

Technical Data Sheet

Installation of the Primary Air Lever: Mansfield 8011 or Phoenix 8612 *Part Number: 5012-057*

Publish Date: 6/7/2007

INCLUDED IN KIT:

Air Control Lever

TOOLS REQUIRED:

5/16 Socket, Wrench, or Nut Driver

PROCEDURE:

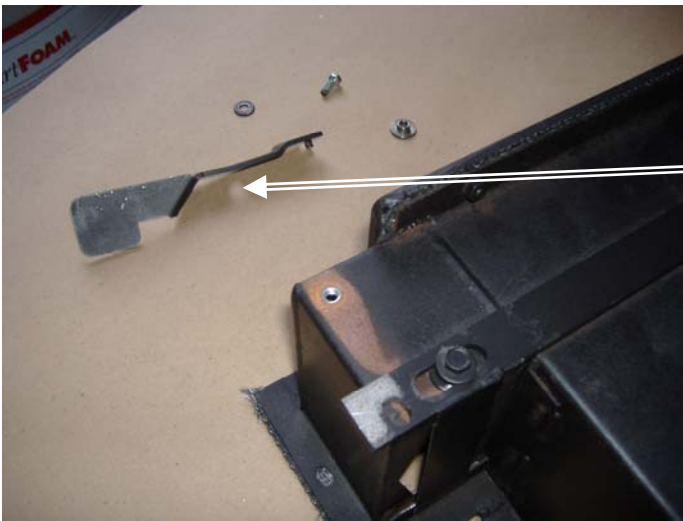


Photo #1
Primary Air Lever with bolt,
washer, and bushing.

1. Place the small end of the bushing into the hole in the primary air lever. (see photo 1)
2. Hook the tab of the air lever into the slot on the primary air control slide. (see Photo 2)

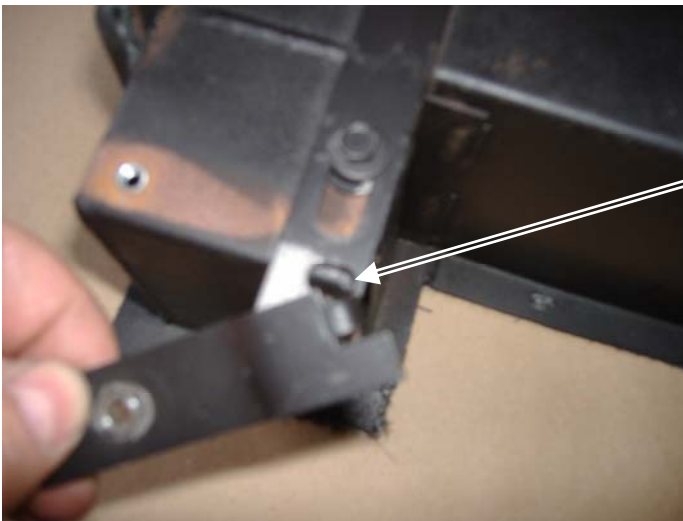


Photo #2
Place the tab of the
lever into the slot on
the air control slide.

3. With the handle hooked into the air control slide, secure the handle by turning in the bolt and washer. (see photo 3)



Photo #3
Secure the handle to the stove.



Photo #4
The air control lever installed. Note the tab in the slot.