

# Technical Data Sheet

## Tudor Model 8120 Inner Panel Replacement Instructions

**Publish Date:** 10/1/2004

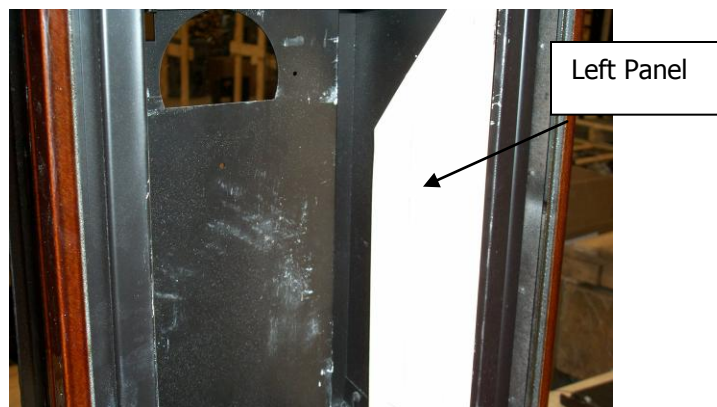
**TOOLS REQUIRED:**

Flat head screwdriver

**CAUTION:** *Only work on a cool stove. Make sure the unit has been shut off for several minutes before attempting to replace the inner panels.*

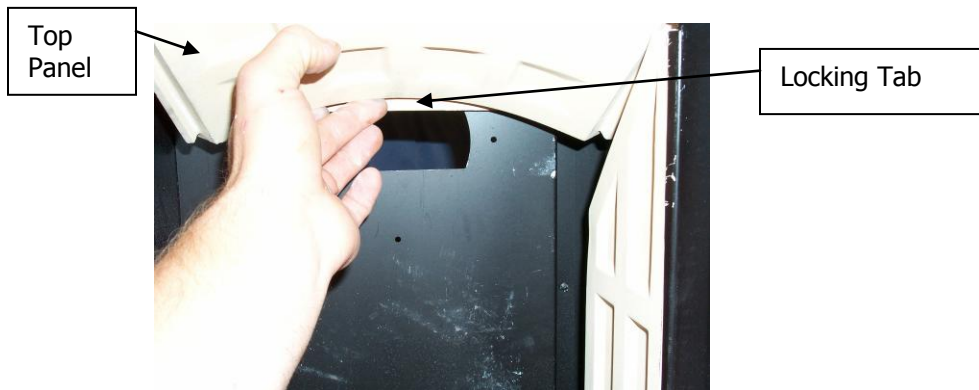
**PROCEDURE:**

1. Open the front doors by pulling on the handle and swinging them open.
2. Using a flat head screwdriver, pry open the two metal tabs at the top the firebox. This will release the glass frame and allow the glass and frame to swing away from the firebox.
3. Lift the glass and frame out of the lower track and place on a safe surface.
4. Locate the left inner panel and insert it into the firebox (*See figure 1*). Do not pull the panel back in the slot in the firebox until all panels are installed in the box.



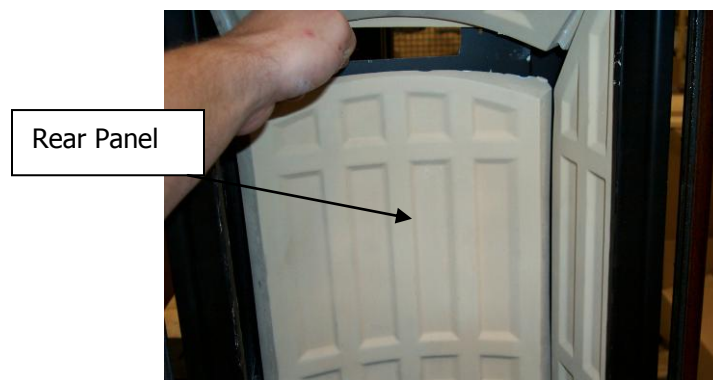
**Figure 1: Left Panel**

5. Locate and insert the top panel with the locking tab on the lower side (*see figure 2*)



**Figure 2: Top Panel**

6. Locate and insert the rear panel. (Hold the top panel up and out of the way, while installing the rear panel) (*See figure 3*)



**Figure 3: Rear Panel**

7. Locate and install the right panel. (*See figure 4*) Once installed, center the rear panel and pull the two side panels back into the firebox slots. Pull the top down to capture the sides and back. The top will lock the four pieces together.



**Figure 4: Right Panel and complete assembly**