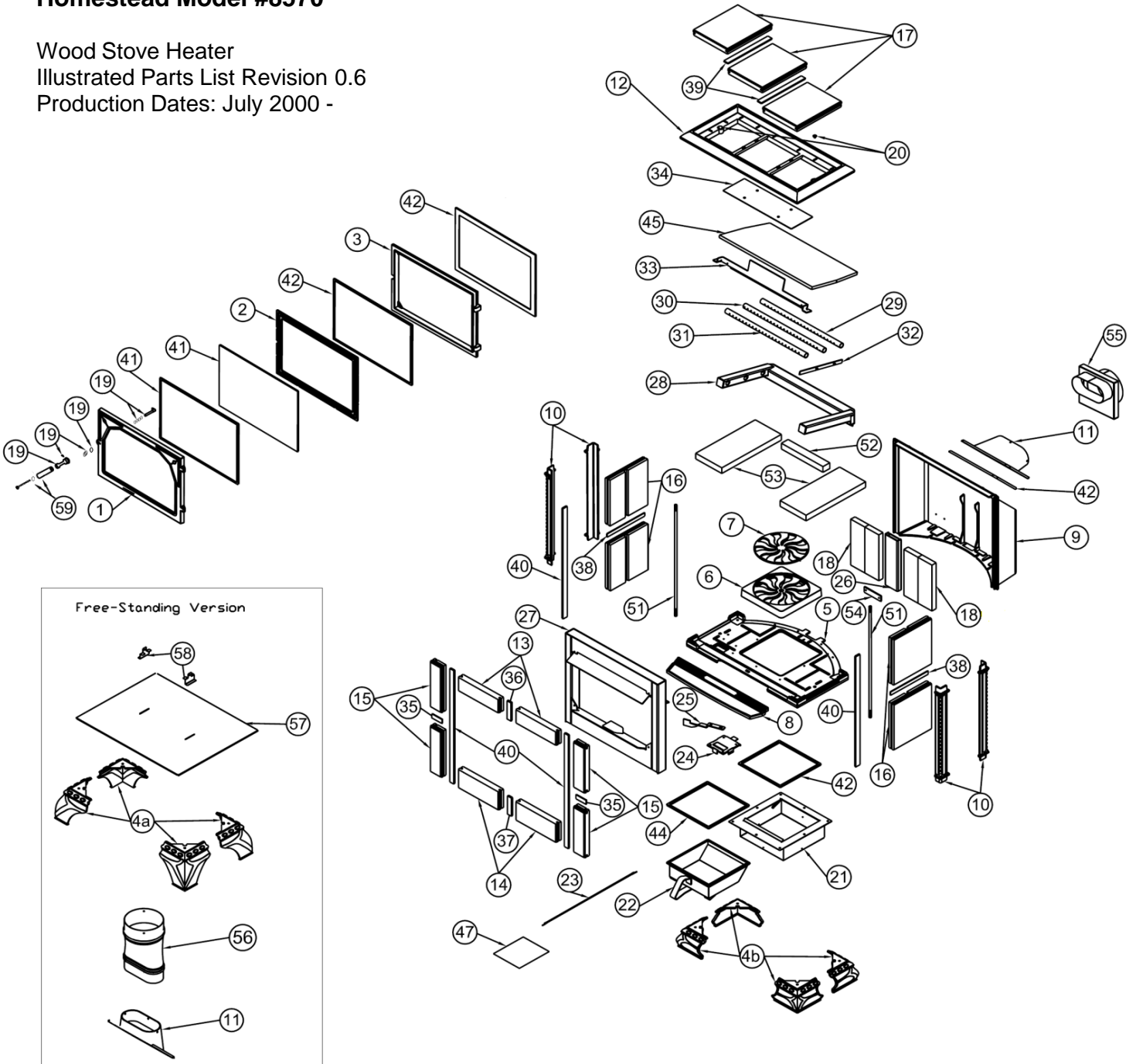




Homestead Model #8570

Wood Stove Heater
Illustrated Parts List Revision 0.6
Production Dates: July 2000 -





Model: Homestead Model #8570

Production Dates: July 2000 -

Serial #: 001001 -

Note: Specify color for cast iron parts which are available in enamel.

Key	Part #	Description	QTY
1	2010-180	Front Door	1
2	2010-550	Glass Retainer	1
3	2010-602	Front Door Frame	1
4a	2510-705	6" Foot (Free Standing Model)	4
4b	2510-700	4" Foot (Hearth Mount Model)	4
5	2510-710	Bottom Casting	1
6	2510-720	Ash Grate Frame	1
7	2510-730	Ash Grate	1
8	2510-741	Ash Lip	1
9	2510-750	Back Panel	1
10	2510-760	Side Leg	4
11	2510-770	Oval Flue Collar	1
12	2510-780	Top Casting	1
13	1141-251	Front Top Stone 2-3/4"x9-1/2"	2
14	1141-252	Front Bottom Stone 3-3/4"x9-1/2"	2
15	1141-253	Front Corner Stone 2-19/32"x9-1/2"	4
16	1541-730	Side Stone 8-7/8"x9-3/8"	4
17	1541-780	Top Stone 8"x10-1/2"	3
18	95-83700	Refractory Back Stone Kit (includes) - Stove Uses 2	
	3060-430	Firebrick: 3-7/8"x9"x1-1/4" (two on each side)	2
	5957-000	Spacer	1
		Replaces Firebrick: 8 3/32"x9 7/8"x1 1/4" (one on each side)	
19	90-73112	Front Door Latch Assembly (includes)	
	4500-2976	Set Screw	1
	4700-0790	Spacer	4
	5010-081	Chrome Handle Crank	1
	5240-138	Spring	1
	5010-078	Front Door Latch	1
	5021-032	Washer: Flat	1
20	4200-0410	(2) 3/8" Cone Nut	
21	5570-010	Air Inlet/Ash Pan Box	



Key	Part #	Description	QTY
22	95-54700	Ash Pan Assembly (includes)	
	5570-020	Ash Pan	1
	3110-059	Gasket: Rope, 3/8" Medium Density	3.33 ft.
23	5570-030	Label Cable 1/16"x12"	1
24	5570-040	Primary Air Control	1
25	5570-050	Primary Air Handle	1
26	5570-070	Secondary Air Riser	1
27	5570-080	Primary Air Manifold	1
28	5570-110	Secondary Air Manifold	1
29	5570-121	Secondary Air Pipe #1	1
30	5570-122	Secondary Air Pipe #2	1
31	5570-123	Secondary Air Pipe #3	1
32	5570-130	Secondary Air Pipe Locking Bracket	1
33	5570-140	Baffle Support	1
34	5570-150	Top Heatshield	1
35	5000-001	Spline: 1/8"x3/4"x1-1/4"	2
36	5000-002	Spline: 1/8"x3/4"x2-1/2"	1
37	5000-003	Spline: 1/8"x3/4"x3-1/4"	1
38	5000-009	Spline: 1/8"x3/4"x8-1/8"	2
39	5000-013	Spline: 1/8"x3/4"x10-3/8"	2
40	5000-2236C	Spline: 1/8"x3/4"x19", "C"	4
41	90-57005	Glass Replacement Kit (includes)	
	3030-026	IR Glass 11 3/16"x17 9/16"x5mm	1
	3160-080	Gasket: Tape, 3/4"x1/16"	5 ft.
42	95-58700	Gasket Kit (includes)	
	3110-057	Gasket: Rope, 3/8" Non-Core, AD	5 ft.
	3110-059	Gasket: Rope, 3/8 Medium Density Rope Gasket	4 ft.
	3160-080	Gasket: Tape, 3/4"x1/16"	5 ft.
	99-090N	2oz Gasket Glue	1
45	3120-920	Ceramic Baffle	1
51	5210-2330	Threaded Rod, 3/8-16x20 1/2", 0.31"	2
52	1-0500-700	Refractory: 1-1/2"x9-3/4"	1
53	1-0500-701	Refractory: 5-1/2"x11-1/4"	2
54	5570-075	Secondary Air Riser Tube Strap	1
55	5700-710	Compact Oval To Round Adapter	optional 1
56	5700-705	Extended Oval To Round Adapter	optional 1



Key	Part #	Description	QTY
57	5930-2005	Bottom Heat Shield (Free Standing Model only)	optional 1
58	5930-2006	Bottom Heat Shield Bracket (x2)	optional 2
59	90-71100	Wooden Handle Kit (includes)	
	3900-177	Handle: Wood	1
	4500-1680	Screw: Machine, 1/4"-20x3-1/4", Round, Slot, ZN	1
	4600-0400	Washer: Lock, 1/4", Split, ZN	3

NOT SHOWN (Items listed below are not shown on the illustration above)

Hardware

Stove Body	3110-056	Gasket: Rope, Bottom Casting Channels, 1/4", AD	3.5 ft.
	4500-2114	Screw: Ash Pan to Btm Casting, 10-24x3/8", F, Pan, PH, Blk Ox	7
	4500-1910	Screw: Center Front hole for Above, 10-24x1/2", Flat, PH, Blk	1
	4500-1876	Screw: Pri. Air Control Slide Retention, 10-24x1/2", Pan, PH, ZN	4
	4100-0280	Screw: Pri. Air Rod to Bottom, Shoulder, 5/16"Dx1/4"L, Socket	1
	4600-1400	Washer: Wave, For Above, 5/16, 0.030"	1
	5570-060	Washer: For Above, Slide Arm	1
	4500-3435	Screw: Bottom Heat Shield Bracket to Btm Cast, 8-32x3/8", F, PH	2
	4500-3200	Screw: Foot to Btm Cast, 5/16"-18x1", Hex, ZN, Gr 2	4
	4600-0300	Washer: Lock for Above, 5/16", Split, Zn	4
	4600-0300	Washer: Flat, for Above, 1/4", Blk Ox	4
	4100-0115	Bolt: Rear Panel to Btm Cast, Carriage, 1/4"-20x1", Ribbed`	4
	4600-0400	Washer: Lock for Above, 1/4", Split, Zn	4
	4200-0200	Nut: Finishing, For Above, 1/4"-20, Hex, ZN	4
	4500-3436	Screw: Secnd. Air Riser Retn. Strap to Rear Panel, 10-24x3/8"	2
	3160-392	Gasket: Flat, Front Door Frame to Stone, 3/8"x1/8"	5.3 ft.
	4500-1360	Screw: Front Door Frame to Pri. Plenum, 1/4"-20x1-1/2", Flat, PH,	4
	4300-0110	Pin: Cotter, Baffle Support to Secnd. Air Plenum, 1/8"x1-1/2", SS	1
	4500-0570	Screw: Top Heatshield to Top Cast, 1/4"-20x1/2", Hex, SS	4
	3110-057	Gasket: Rope, Top Cast Channel, 3/8", AD	5.7 ft.
	5210-2330	Rod: Top Cast to Btm Cast, Thread, 3/8"-16x20-1/2", 0.31"	2
	4200-0410	Nut: For Above, Top, Tamper Resistant, 3/8"-16, ZN	2
	4200-0400	Nut: For Above, Bottom, 3/8"-16, Finishing, Hex, ZN	2
	4600-0700	Washer: Lock, For Above, 3/8", Split	2
	3110-059	Gasket: Rope, Ash Pan, 3/8" Med Den	3.50 ft.
	3110-056	Gasket: Rope, Flue Collar Channel, 1/4", Ad	2.92 ft.
	4500-0400	Screw: Flue Collar to Rear Panel, 1/4"-20x3/4", Hex, ZN, Gr 2	4
	4500-1100	Screw: Empty Holes Beside Flue Collar, 1/4"-20x1", Pan, PH, Blk	4



Key	Part #	Description	QTY
	4500-3436	Screw: Empty Holes on Bottom of Rear Panel, 10-24x3/8"	4
Door	4500-3430	Screw: Glass Retainer Frame to Door, 8-32x3/8", Flat, PH, Blk Ox	8
	3110-057	Gasket: Rope, Glass Retainer Channel, 3/8", AD	5 ft.

